



GRACE ARJUN HOMES is a state-of-art residential project being developed in Salbari, sprawling in 80 katthas of land with 50% open area, unfolding the nature in myriad ways so mesmerizing that it captivates and leaves you speechless. Be it subtle stroke of sunshine waking you up or the sweet lullabies of birds that whisper you to sleep and wisps of fresh air that makes your everyday living more joyous, this is an apartment designed for people who believe that lots of light, space and clean air are essential for a good living.

The project is built on seven towers, each consisting of ground plus four storey having 160 well ventilated, modern and exquisitely designed apartments, creating a fine balance between aesthetics and functionality to provide its residents with maximum comfort and security in a natural and scenic environment.

The residential project is located on Salbari, just a few minutes of drive away from Darjeeling More, bringing your needed destinations like schools, hospitals, malls, fuel stations, hotels, etc. at a convenient and happy distance from your new home.



FEATURES

- ▶ Easy accessible location.
- ▶ Eye catching elevation.
- ▶ Vastu oriented landscaping
- ▶ Eco Friendly design with 50% open space.
- ▶ Beautifully landscaped garden.
- ▶ Shuttle service upto Darjeeling More.
- ▶ Children park cum playing space.
- ▶ Club house and swimming pool.
- ▶ Security guard room.
- ▶ CCTV surveillance system at the main gate.
- ▶ Video Phone on Doors. *
- ▶ Intercom facility in each flat.
- ▶ 24 x 7 water supply.
- ▶ Lift of reputed make in each tower.
- ▶ Community hall cum society office.
- ▶ Fully equipped gym.
- ▶ Jogging & cycling trail in midst of tea garden.
- ▶ Paved internal compound road.
- ▶ Wide staircases with Stainless Steel railings.
- ▶ Generator for lifts and common space.
- ▶ Inverter point in each flat.
- ▶ Common toilet at basement.
- ▶ Departmental store - 7x11.
- ▶ Seperate servant quarter. *
- ▶ Parking Space. *

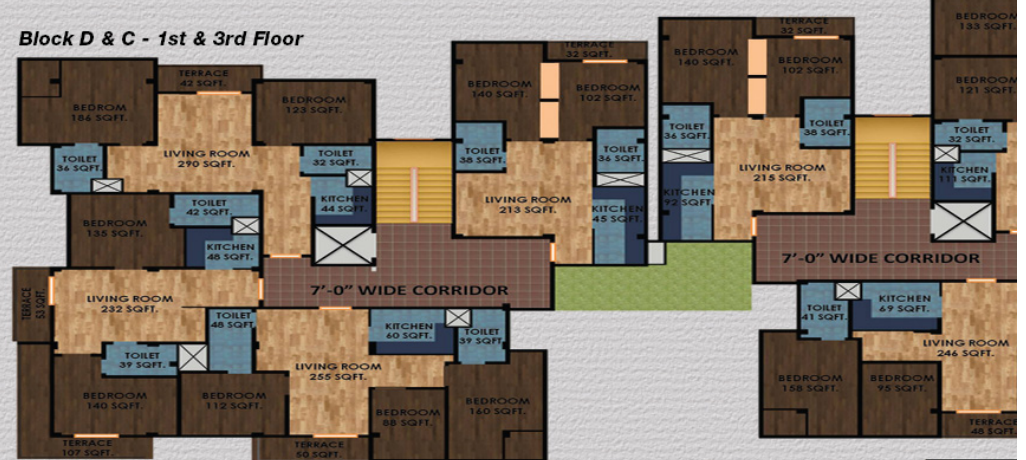


Block A - 1st & 3rd Floor

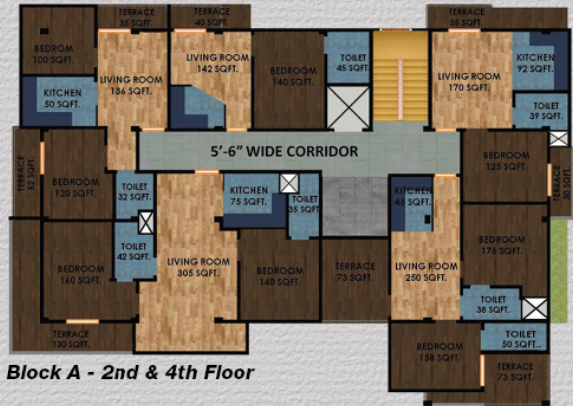


Block B - 2nd Floor

Block D & C - 1st & 3rd Floor



Block D & C - 2nd & 4th Floor



Block A - 2nd & 4th Floor



Block B - 3rd Floor

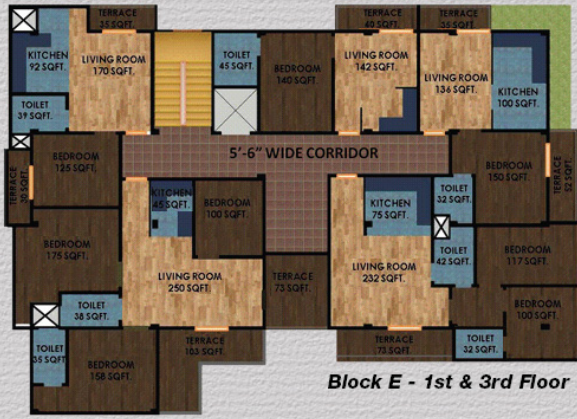
Block D & C - Ground Floor



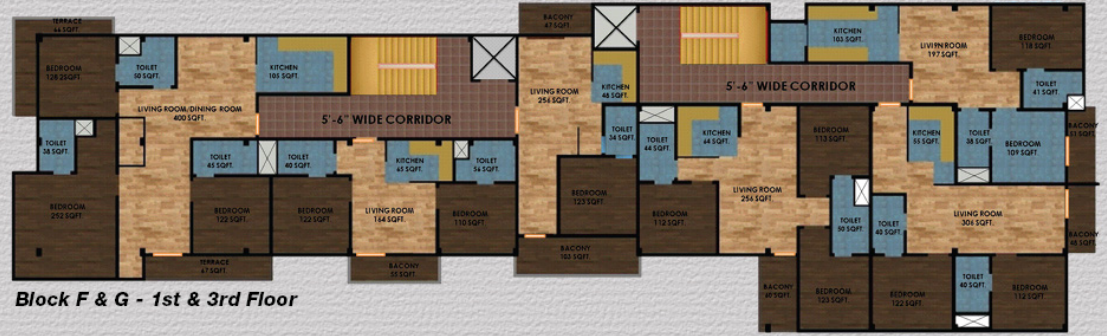
Block A - Ground Floor



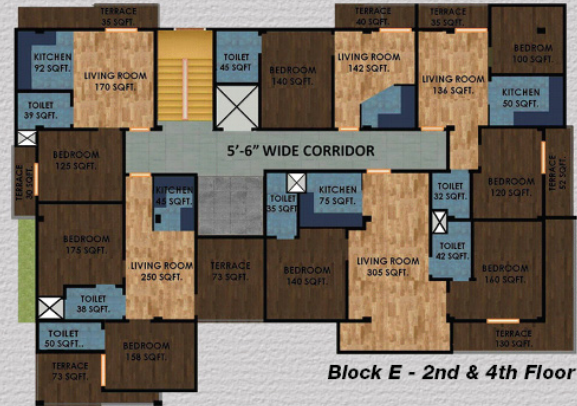
Block B - 4th Floor



Block E - 1st & 3rd Floor



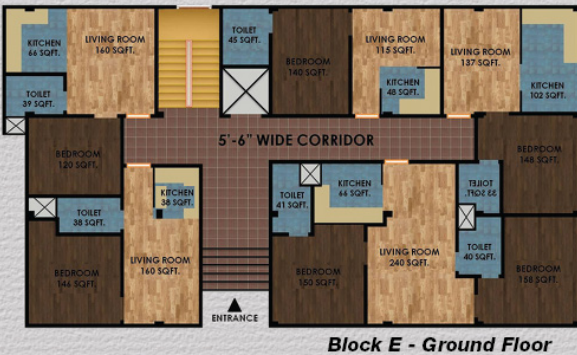
Block F & G - 1st & 3rd Floor



Block E - 2nd & 4th Floor



Block F & G - 2nd & 4th Floor



Block E - Ground Floor



Block F & G - Ground Floor

ENTRANCE

